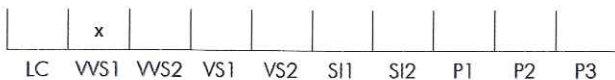


Colour Grading Scale

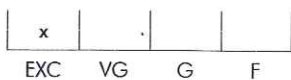


Clarity Grading Scale



Cut Grading Scales

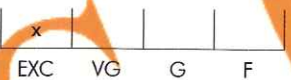
Proportions (round brilliants only)



Polish



Symmetry



**Certificate N° 00000000000**

Antwerp, January 1, 2009

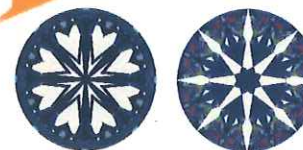
Shape	brilliant
Carat (weight)	1.02 ct
Fluorescence	nil
Colour Grade	exceptional white (E)
Clarity Grade	WS1
Cut	
Proportions	excellent
Polish	excellent
Symmetry	excellent
	Hearts & Arrows

Laser Inscription

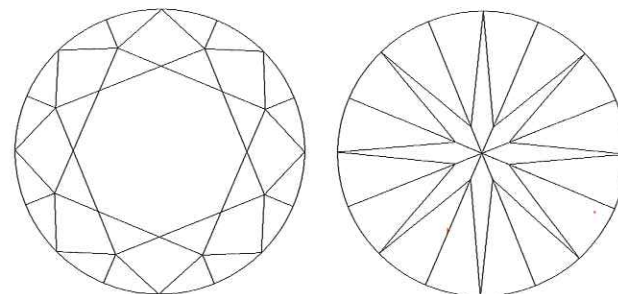
inscription on girdle:  
*Antwerp Certified*  00000000000

Technical Information

Measurements	6.53 - 6.56 mm x 4.04 mm
Girdle	medium 4.0% faceted
Culet	pointed
Total Depth	61.3 %
Table Width	62 %
Crown Height ( $\beta$ )	13.5 % (35.3 deg)
Pavilion Depth ( $\alpha$ )	44.5 % (41.7 deg)
Length Halves Crown	45 %
Length Halves Pavilion	80 %
Sum $\alpha$ & $\beta$	77.0 deg



Hearts & Arrows  
by HRD Antwerp



Gemmologists

The stone in accordance with the mentioned number has been identified as a natural gem diamond.

Selective characteristics have been indicated in order to clarify the description and/or for further identification. Symbols do not usually reflect the exact shape or size of the characteristic.



The HRD Antwerp-Diamond Lab is BELAC accredited for the quality examination of polished diamonds under No. 039-TEST. This certificate is established conform the IDC Rules for grading polished diamonds, approved by WFDB and IDMA and may not be reproduced by any means whatsoever unless complete.

Report N° 0000000000

Antwerp, January 1, 2009

Shape	(1) brilliant
Carat (weight)	0.50 ct
Colour Grade	exceptional white (E)
Clarity Grade	VVS1
Cut (prop./pol./symm)	excellent/excellent/excellent

Fluorescence	nil
Measurements	4.49 - 4.47 mm x 2.80 mm
Girdle	medium 4.0 % faceted
Culet	pointed
Total Depth	62.5 %
Table Width	62 %
Cr. Height ( $\beta$ )	13.5 % ( 35.3 deg )
Pav. Depth ( $\alpha$ )	44.5 % ( 41.7 deg )

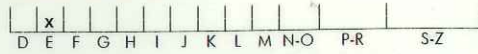


**Hearts & Arrows**  
by HRD Antwerp

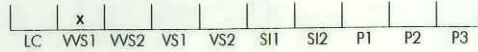
Antwerp Certified  0000000000

Remarks (1) laser drilled

**Colour Grading Scale**

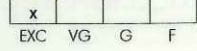


**Clarity Grading Scale**



**Cut Grading Scale**

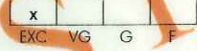
**Proportions** (round brilliants only)



**Polish**



**Symmetry**



The stone in accordance with the mentioned report number has been identified as a natural gem diamond.

SPECIMEN